

JUSTIN DAVID

KAHUNA



9 Colors

Suggested Use	Upholstery
Width	55"
Content	78% PVC 20% Polyester 2% Polyurethane
Repeat	1/2"H x 11/16"V
FR Rating	NFPA 260 / UFAC Class 1 / Cal Tech Bul 117-2013 / IMO A.652 (16) 8.2 & 8.3
Abrasion	Exceeds 100,000 Double Rubs (Wyzenbeek)
Finish	Outdoor Rated, Anti-Fungal
Cleaning	Rinse with mild soap and water, wipe with a soft cloth using a non-abrasive cleaner. Rinse with fresh water and wipe dry. Bleach Cleanable (4:1)
Roll Size	Approx. 33 Yards
Custom Color	450 Yards



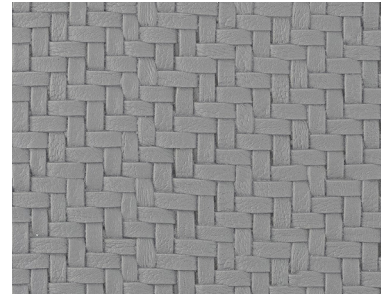
Kahuna



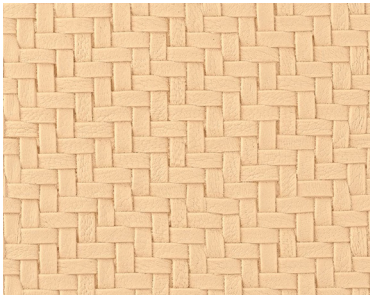
Divine Path



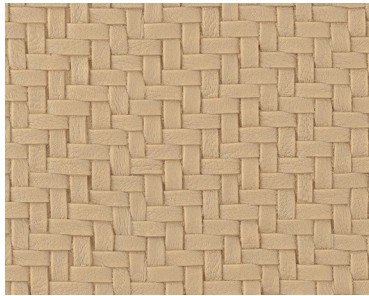
Lunaria



Foundation Stone



Maca Root



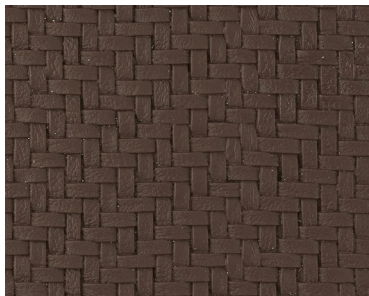
Lomami



Rain Shadow



Chufa



Coffee Pot



Kilauea

