

INDOOR OUTDOOR PERFORMANCE TROWS



Sunset Social Collection

JUSTIN DAVID
TEXTILES



Delray Stripe Throw

INDOOR OUTDOOR PERFORMANCE TROWS

Sunset Social Collection

Inspired by decades of expertise in performance textiles, Justin David & Sunbrella® have partnered in an exclusive offering to the hotel industry with our newest collection. We are proud to provide the trusted durability of Sunbrella® in a soft yet resilient collection of throws that will last for years to come.





Montauk Herringbone Throw



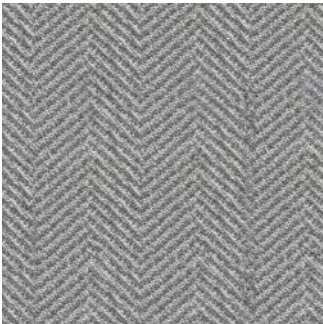
Elderflower



Bluff



Polo Pony



Cufflink



Newport Textured Throw



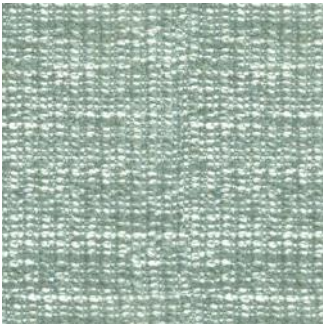
Tennis Whites



Sandbar



Harbor



Fairway



Royale



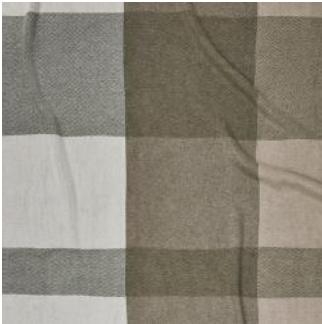
Tinder



Sconset Check Throw



Cedar Shake



Brant



Scotch



Delray Stripe Throw



Titlist



Blue Banister



Verdant



Cola



Montecito Stripe Throw



Cypress



Tuscan



Birnam Wood



Midsummer Night





White Wine



Slip Knot



Morena



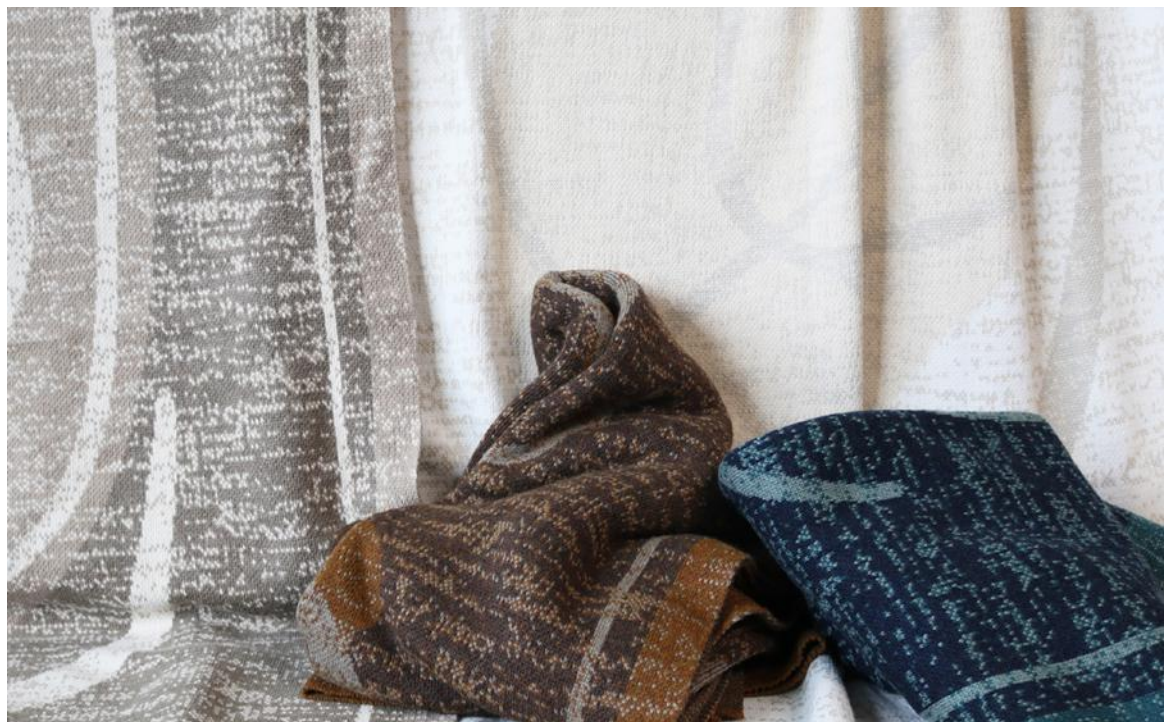
Stargazer





BEYOND DURABILITY A SENSE OF PLACE

Our bespoke & branding capabilities allow our throws to be fully customized, creating a signature piece that reflects your property's unique identity.



Pismo Transitional Throw





INDOOR OUTDOOR PERFORMANCE TROWS

- In Stock
- Fade Resistant
- Mold & Mildew Resistant
- Easy to Clean
- Machine Washable
- Bleach Cleanable
- Five Year Limited Warranty
- Exclusive Justin David Designs
- Bespoke & Branding Possibilities





ABOUT JUSTIN DAVID

For over 70 years, Justin David has been at the forefront of textile design & manufacturing for hospitality & commercial interiors. We partner with designers & brands to deliver innovative textile solutions tailored to every project.



ABOUT SUNBRELLA

Sunbrella believes in worry-free fabrics. Over the years, we have expanded our portfolio, developing new fabrics & technologies specifically designed for use on outdoor furniture, indoor furniture, window treatments, boats, & more.



JD



JUSTINDAVID.COM